

Wintery decoration pendant from Raysin

Instructions No. 2855

Difficulty: Beginner 🍴🍴🍴🍴

Working time: 1 hour 30 Minutes

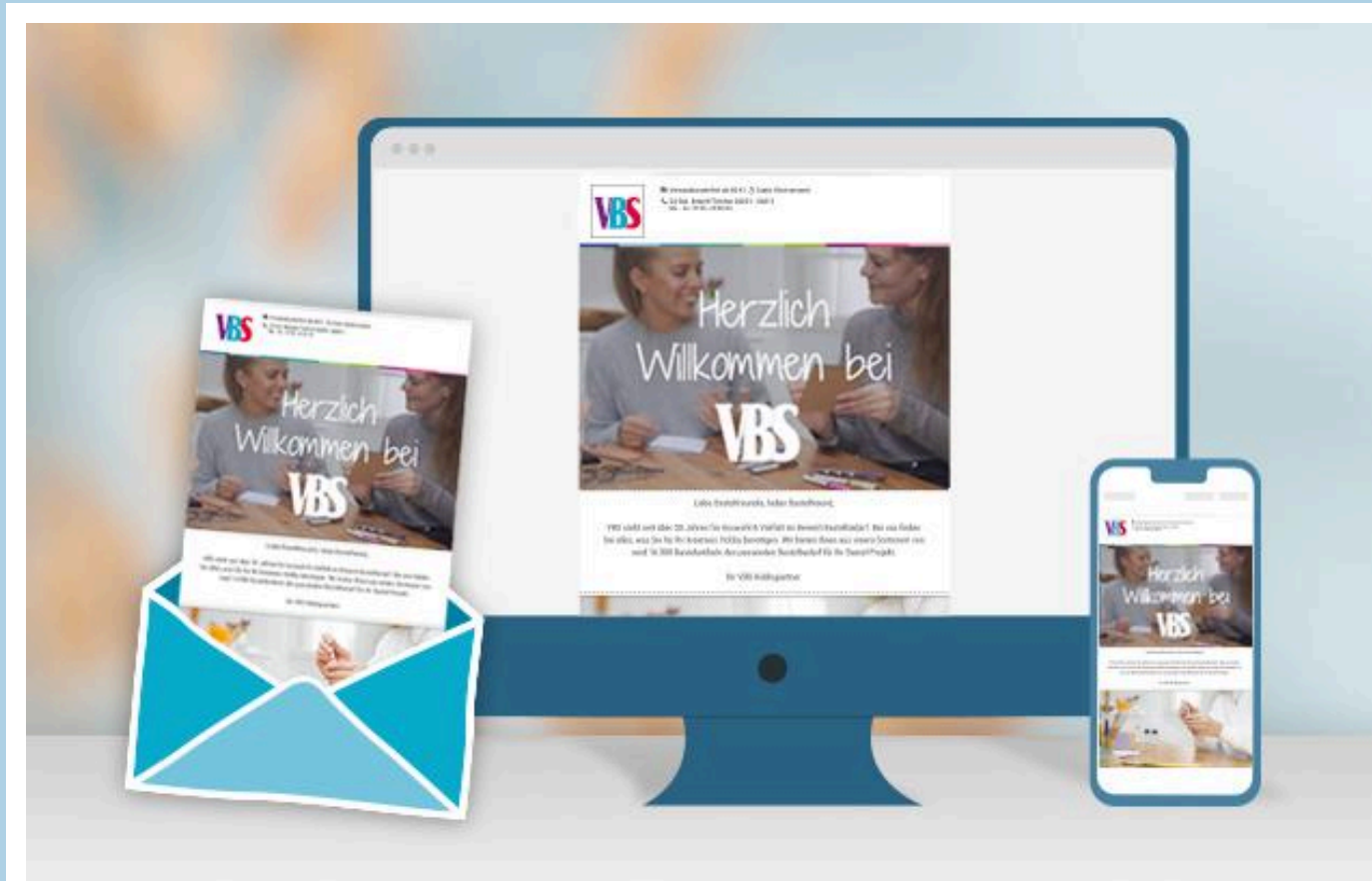
Make cute decoration pendants with the casting compound Raysin. It is air-hardening, odourless and free of harmful substances. With a casting mould, you can make great decoration pendants in the shape of gnomes, stars and lanterns. Decorated with markers, the pendants look great as gift tags, on the Christmas tree and as Christmas decorations.



How to water and shape the decoration pendant:

First mix the **Raysin** according to the instructions to create a creamy mixture. Now pour the mixture into the molds. After approx. 30 minutes Time to dry: the **castings** can be demolded and then further left to dry.

After Time to dry: the castings can be painted. **Markers** can be used to draw patterns, contours, accents and great color effects on the pendants. Finally, only attach ribbons for hanging.



New instructions

Straight to your inbox every week

register now >

Article information:

Article number	Article name	Qty
18301	Silicone casting mould "Secret Santa"	1
21343	Silicone casting mould "Reindeer friends"	1
485555-01	Casting powder "Raysin 100", white1 kg	1
11263	edding 1300 colour pen, set of 20	1
17112	Micro macramé cord, waxedWhite	1