

Lettering with glass mosaic

Instructions No. 2977

Difficulty: Advanced 🍴🍴🍴🍴

Working time: 8 Hours

Personalise your front door with this beautiful decorative idea. This welcome sign looks incredibly inviting and friendly, a real eye-catcher!





First, the lettering is partially painted with Chalky Outdoor Colour.

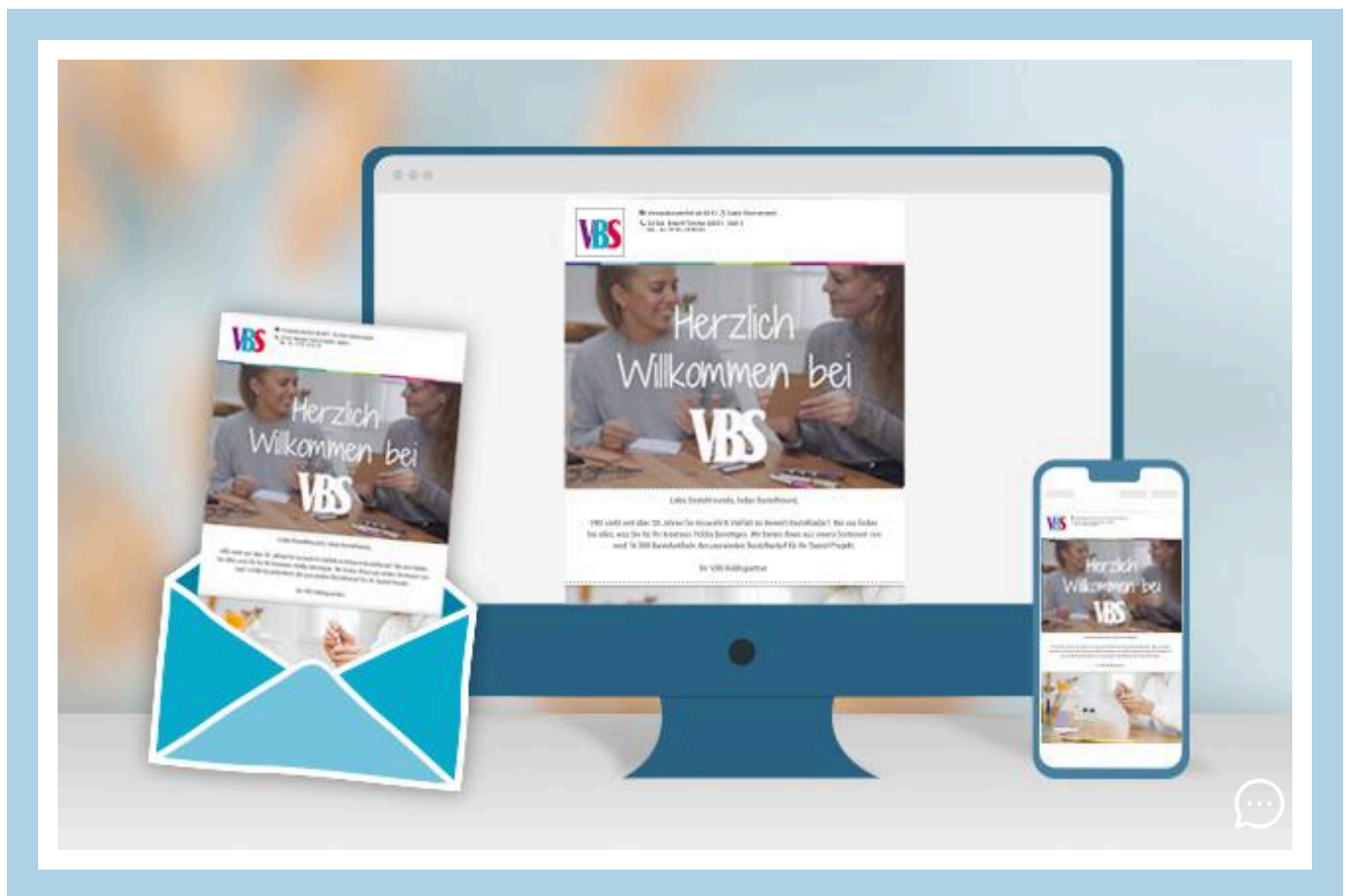
Once dry, the **glass mosaic stones** are glued onto the letters in the shape of flowers. You can then stick the **crackle mosaic** around the flowers as desired. You can use our example image as a guide here.

Tip: To get straight edges, you can mask off the lettering with masking tape.

Once this has dried, mix some **joint filler** with water to make a creamy mixture. Use a brush to apply the compound to the joints and spread it evenly. Remove any excess joint filler from the mosaic stones with a damp sponge.

Once the joint filler has dried, the stones must be wiped or polished with a dry cloth. Finally, the entire surface should be sprayed with **permanent spray** to protect it. This must be allowed to dry sufficiently and completely.

Finally, tie a **ribbon** to the loops on the back of the lettering.



New instructions

Straight to your inbox every week

Register now >

Article information:

Article number	Article name	Qty
22769	VBS Wooden lettering "Welcome"	1
19797	Glass mosaic stones "Diamond", colorful mix, approx. 180 gDrop	1
466226-12	Crackle Mosaic PlateBlack	1
118026-01	Transparent mosaic glue50 g	1
465755-01	VBS Mosaic-Joint FillerWhite (leider ausverkauft)	1
118040	Mosaic joint finish, 100ml	1
755627-14	VBS Chalky Outdoor Color, 100 mlAntique Grey	1
12052402	VBS Flat brush "BASIC", set of 6	1
330350	VBS Painting sponges, 3 pieces	1
13992	Jute cord "Basic"Black	1
70522	Crepe-Adhesive tape, 50 m	1
755290-02	edding 5200 "Permanentspray", Clear varnishSilkmatt	1